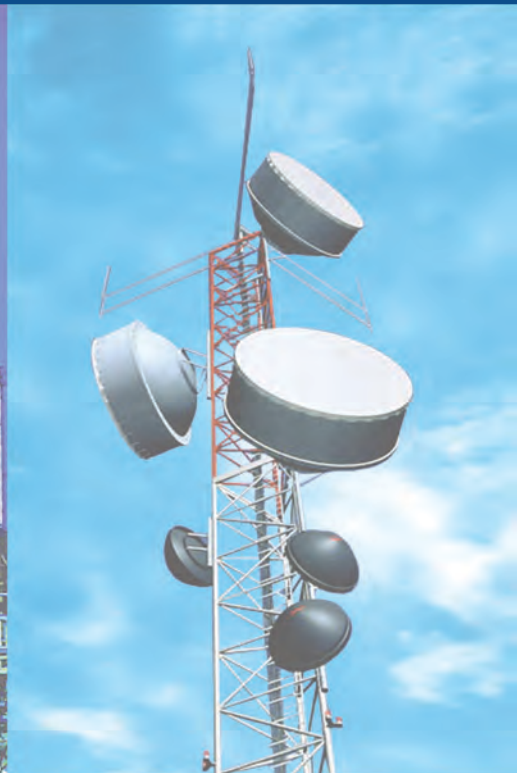


Since
1977
Design, Development, Manufacturing

HBL
www.hbl.in

GEN ON



Sealed Maintenance Free Pure Lead Tin Battery

Genon batteries are made with state of the art "Pure Lead Tin Thin Plate" technology to deliver high cranking currents. This ensures a reliable start of the genset in any environmental condition.

Genon is a Sealed Maintenance Free battery, delivered in factory charged and ready to use condition.

FEATURES

- ❑ High Cranking Current : Smaller battery for the same job
- ❑ Low Self Discharge : Assured start even after idle condition for long duration
- ❑ Maintenance Free : No water top-up and specific gravity checks
- ❑ Terminals with copper alloy : High electrical conductivity
No corrosion, No wear and tear

BATTERY MODELS & SELECTION CHART

MODEL	No. of 12V Batteries *	GENSET RATING (KVA)	Battery Dimensions (L X W X H in mm)	Weight (Kg)	CCA as per SAE (Amps)	Conventional Equivalent
GN 32-12	1	7.5, 10	165 x 145 x 210	12.5	420	12V 60Ah
GN 65-12	1	15 to 140	330 x 168 x 200	23.5	650	12V 88 to 150Ah
GN 65-12	2	160 to 380	330 x 168 x 200	23.5	650	12V 120 to 150Ah
GN 100-12	2	500 to 625	410 x 176 x 240	35	1100	12V 180 to 200Ah
GN 160-12	2	750 to 1500	525 x 225 x 240	58	1600	2 x 12V 180 to 200Ah

* No of batteries depends on starter motor rating / voltage.

Genon batteries complies to international standard IEC 60095-1:2006.

Note: Alternator output voltage must be in between 13.8 to 14.2V for a 12V rating and 27.6 to 28.4V for a 24V rating to prevent damage to battery

HBL

HBL Germany GmbH
Emilienstraße 24A
08056 Zwickau, Germany
Email: info@hblpower.de
www.hblpower.de